



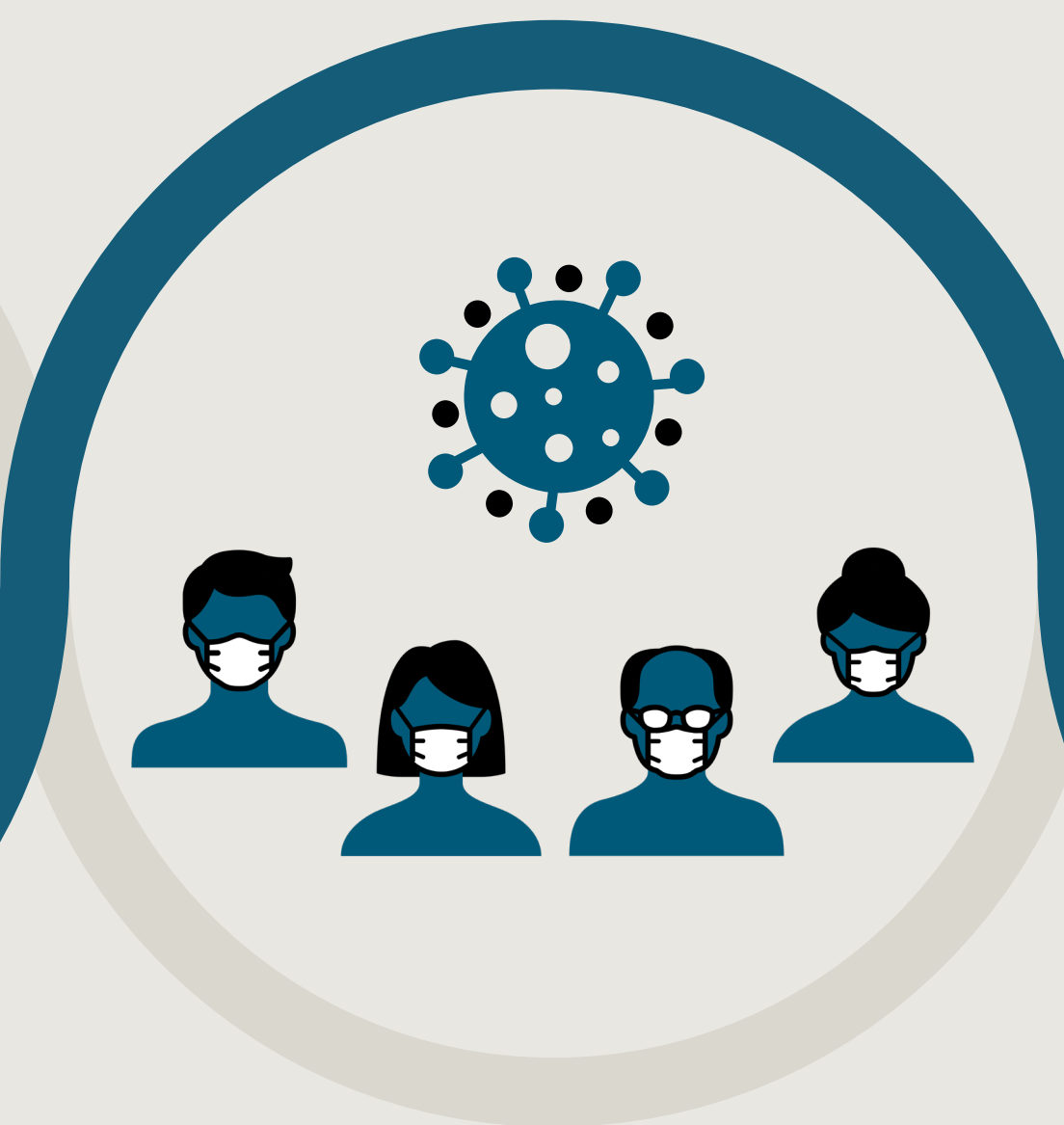
What does the pandemic mean for health and health inequalities?

The COVID-19 impact inquiry is looking at three time periods in relation to the pandemic: before, during and after.



1 Before

- How did people's existing health shape their experience of the pandemic?
- How did people's social and economic circumstances influence their experience of COVID-19?
- How was UK's national experience affected by its collective health, social and economic resilience?



2 During

- How did the response to the pandemic impact on people's health?
- How has the response affected the social and economic factors that influence people's long-term health?



3 After

- What might the implications of the pandemic be for people's future health and health inequalities?
- What might the changes in people's social and economic circumstances mean for their future health?
- How can we learn from the pandemic to build a fairer society and what are the implications for government decision making?



The inquiry is spotlighting groups who have been disproportionately affected by the pandemic including:

- Disabled people
- Young and older people
- People with mental health conditions
- Minority ethnic communities
- Key workers
- Formal and informal carers